

THE METRO[®]

Making Furniture for Tomorrow

NESTER
COLLECTION

THE CITY
Office Furniture



Nester 03



Nester 01



Nester 02

NESTER

Designed by Korean & Made in Vietnamese

Ergonomics design, healthy support and exceptional value are always attractive - and Nester delivers all three.

Our design team created a fully family of Nester that sets the reference point in its class for quality, performance and design



THE CITY

Modern Furniture



Nester 01



Nester 02

PERFORMANCE

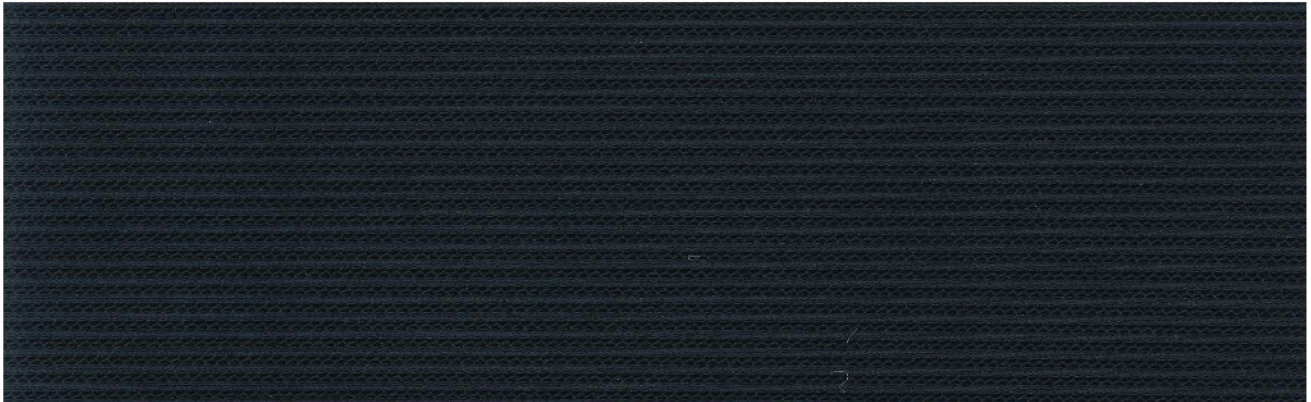
Our exceptional value of lumbar support that brings the outstanding performance for users. Nester is always perfect for long - hour working users due to its synchronized mechanism and 4D armrest.



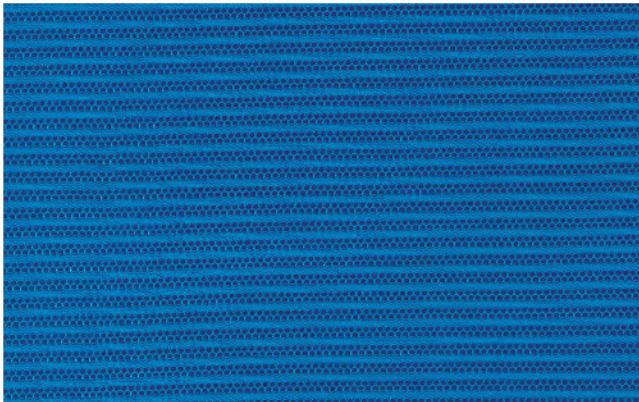
Nester 03



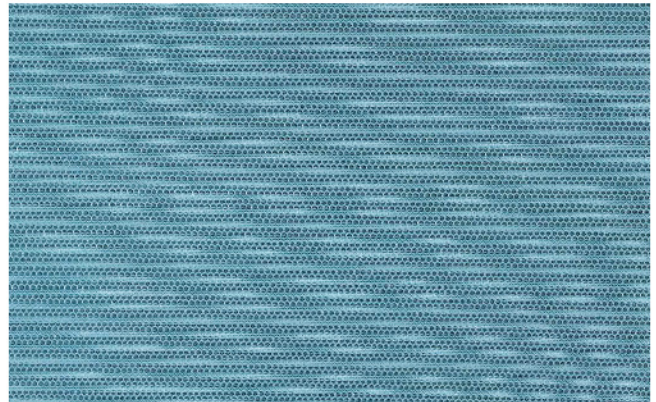
INTERWEAVE



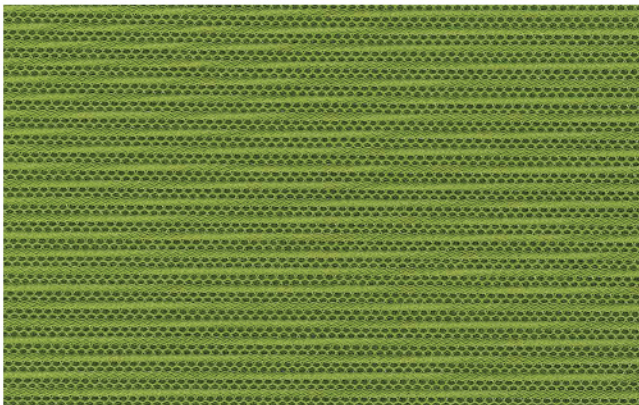
Dark - IW 01



Sea - IW 02



Cobalt - IW 03



Meadow - IW 04

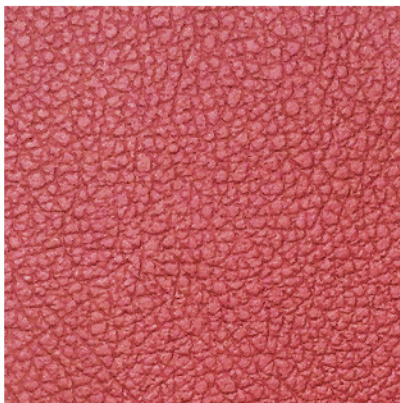


Livid - IW 05

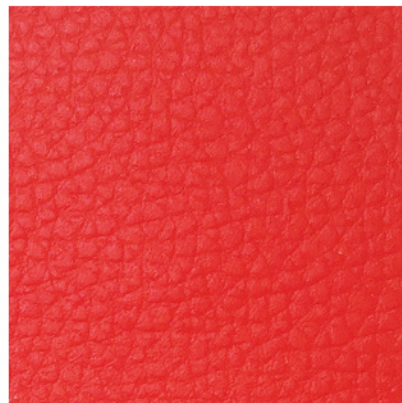
ASEAN SERIES



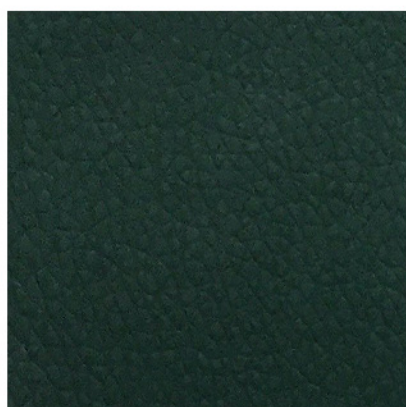
Pure White - 874



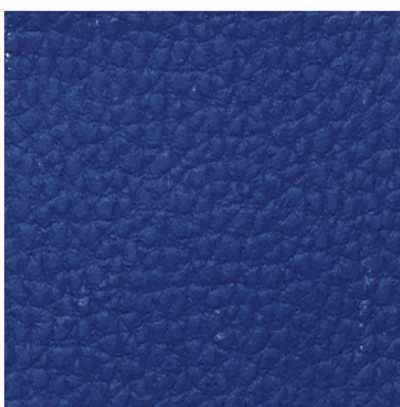
Deep Red - 875



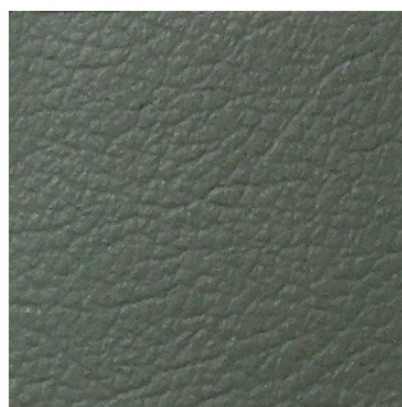
Light Red - 876



Silver Green - E068



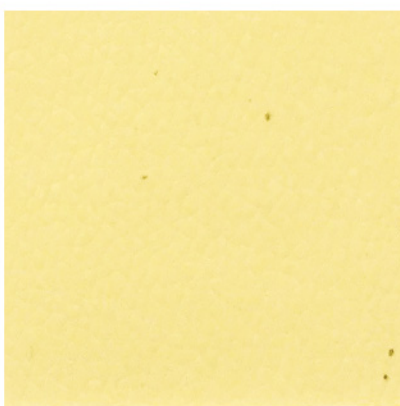
Dark Blue - E327



Grey - 882



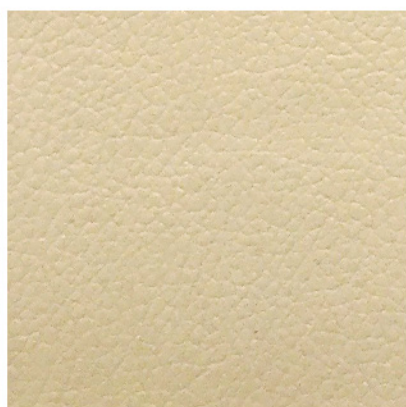
Orange - E067



Lime Yellow - E062



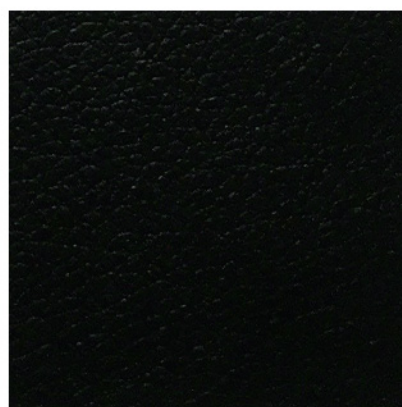
Beige - 892



Slate Beige - 894



Dark Beige - 895



Black - 975J

ZACK SERIES



Floral Red - 91B



True Orange - 14B



Leaf Green - 229B



Grape Purple - 413B



Raining Grey - 29B

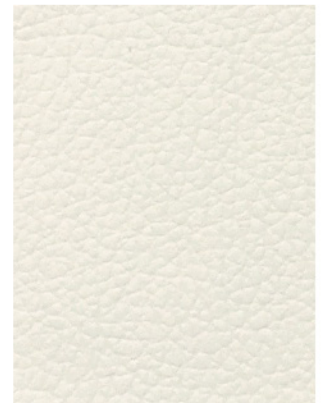


Camel Beige - 5B

CODY SERIES



Creamy Beige - E063



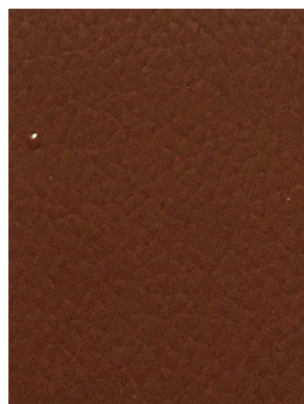
Milky White - E064



Lordy Brown - 032



Tindy Brown - 031

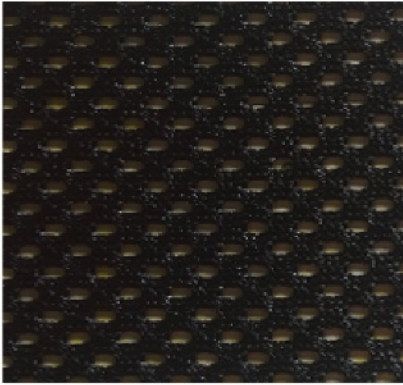


Cosy Brown - E055

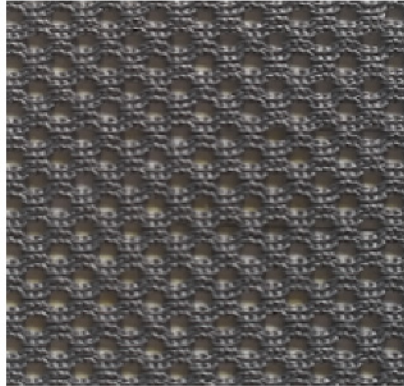


Classy Black - 050

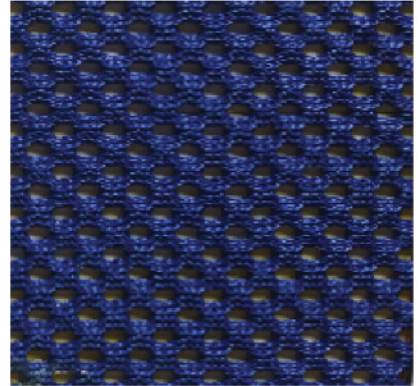
MESH SERIES



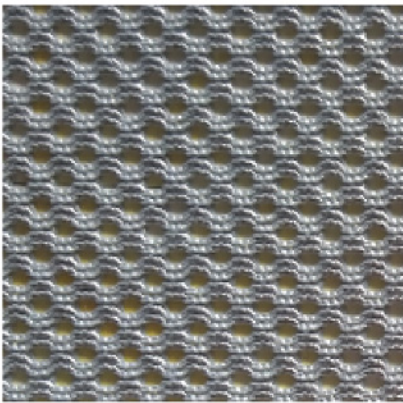
Black - Mesh 31



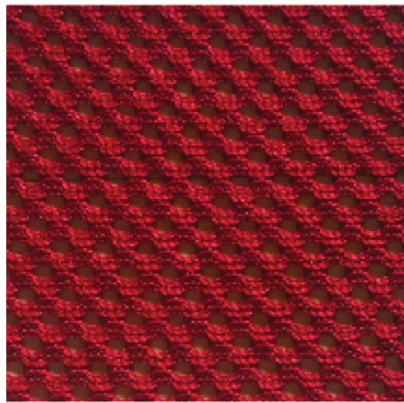
Slate Grey - Mesh 32



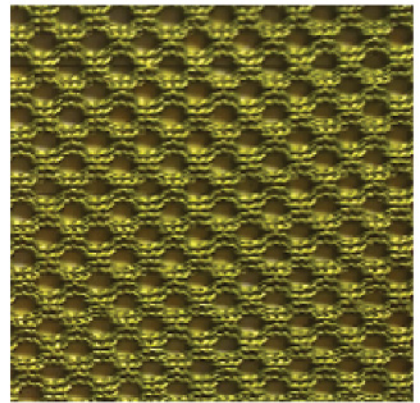
Royal Blue - Mesh 33



Silver - Mesh 34



Deep Red - Mesh 35



Olive - Mesh 37

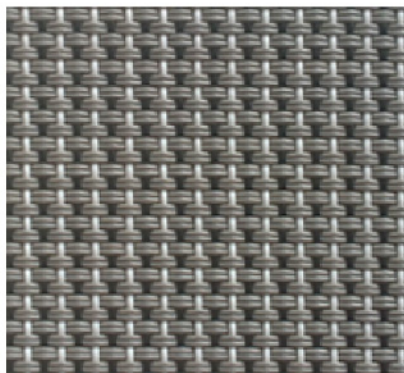
NETWORK SERIES



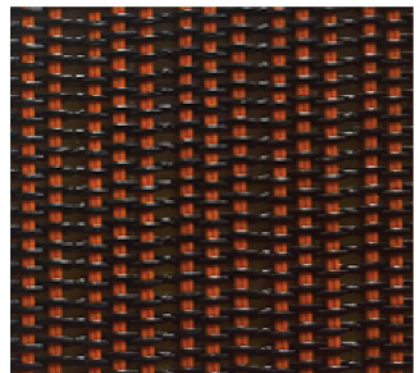
Queen - NW01



King - NW02



Sapphire - NW03

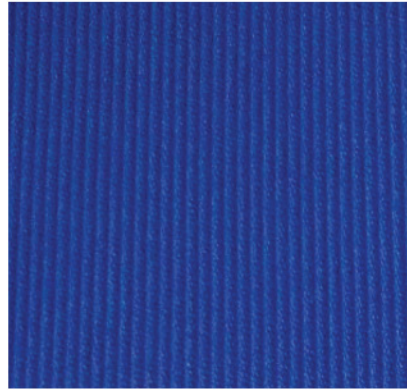


Diamond - NW04

ARTSY SERIES



Matt Black - AT61



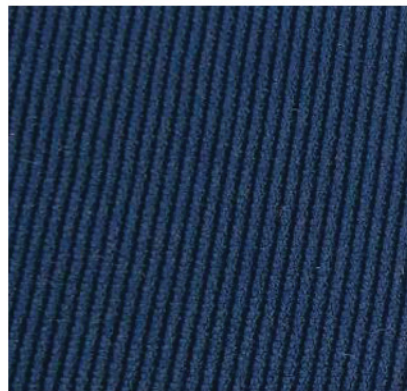
Blue - AT62



Lara Red - AT63



Martique Green - AT67



Jamaica - AT69



Pink - AT 72

DAISY SERIES



Daisy Black - D1601



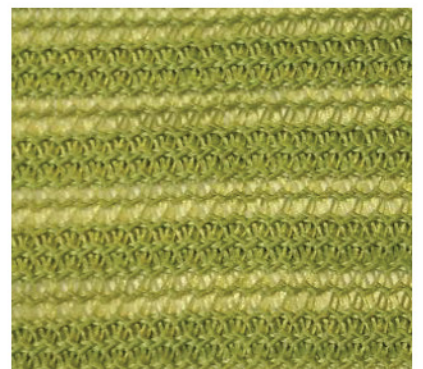
Daisy Blue - D1602



Daisy Grey - D1603

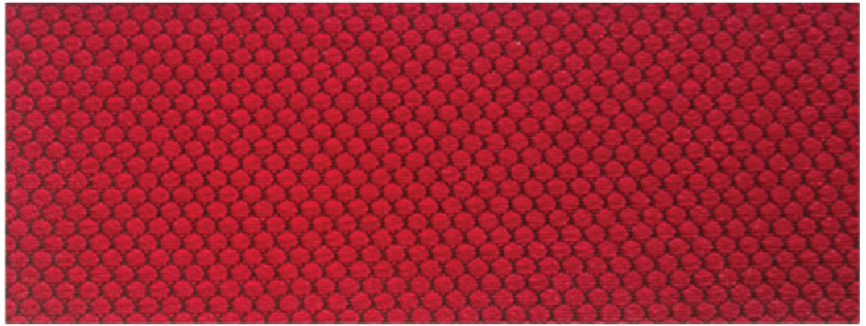


Daisy Red - D1604

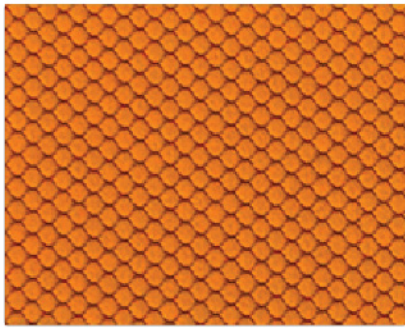


Daisy Green - D1612

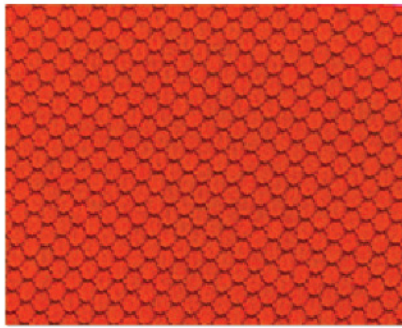
BLOOM SERIES



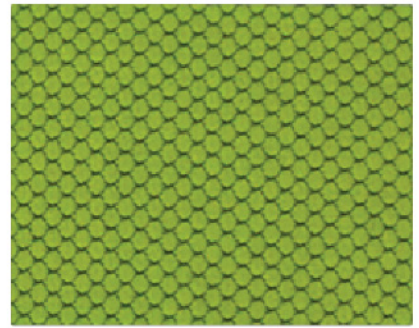
Deep Red - BL402



Honey - BL404



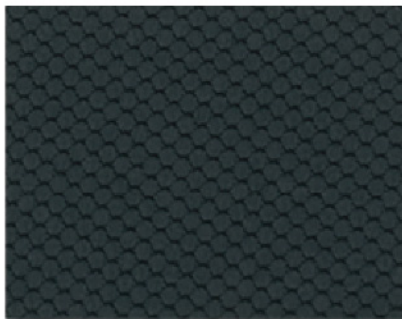
Mandarin - BL405



Olive - BL411



Royal Blue - BL415

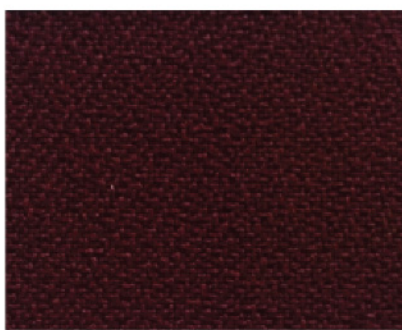


Slate Grey - BL417

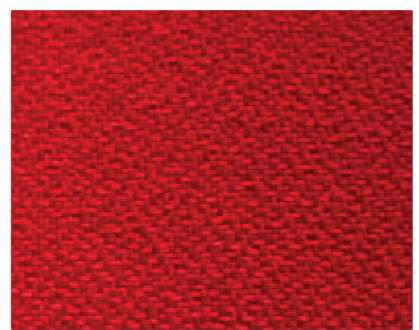


Black - BL418

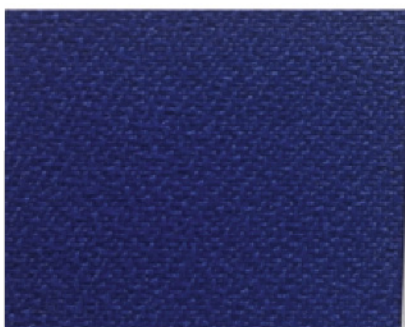
LEO SERIES



Blush - YL02



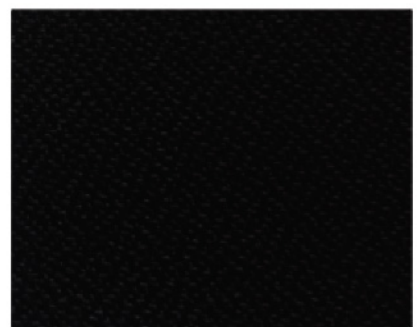
Passion - YL03



Sapphire - YL05



Shell - YL08



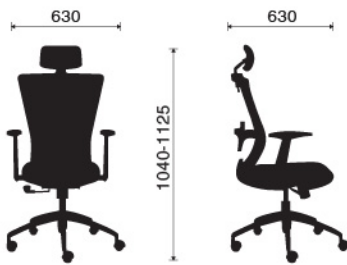
Bean - YL09

Nester family

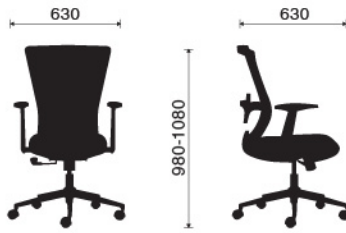
Nester with headrest
Nester without headrest
Nester with lumbar support
Nester without lumbar support

Overview

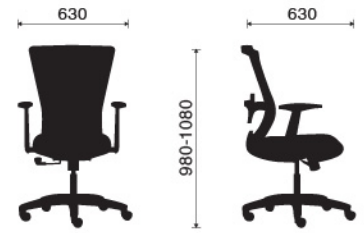
The following information applies only to Nester
Maximum user weight: 120kg
Seated comfort range: 4 hours+
Back Support: Available
Lumbar support: Standard
Mechanism: Simple synchronized mechanism



Nester 01



Nester 02



Nester 03



HCM OFFICE & SHOWROOM

196 Ton That Thuyet Street,
Ward 3, District 4,
HCM City, Viet Nam

Hotline 0914 777 332

HANOI REP OFFICE & SHOWROOM

3rd Floor, V+ Mall Hoa Binh,
505 Minh Khai Street,
Hai Ba Trung District, Ha Noi, Viet Nam

Hotline 0833 400 068

DANANG REP OFFICE & SHOWROOM

3rd Floor, Danabook,
76-78 Bach Dang Street, Da Nang City,
Viet Nam

Hotline 0909 223 263

CANTHO REP OFFICE & SHOWROOM

Room 604, 160 Mac Thien Tich Street,
An Phu Ward, Ninh Kieu District,
Can Tho City, Viet Nam

Hotline 0909 223 263

CAMBODIA REP OFFICE

Room 11B, 11th Floor Building No. 29,
Mao Tse Toung Blvd,
Phnom Penh, Cambodia

Hotline +855 77 86 35 68

HA NOI FACTORY

Bac Da Village, Phu Lo Commune,
Soc Son District, HaNoi, Viet Nam

DONG NAI FACTORY

Lot H6-H8, Road No.6, An Phuoc Industrial Park,
Long Thanh, Dong Nai, Viet Nam



Your office can do more - for you and your customers.
Find out how at www.themetro.vn

